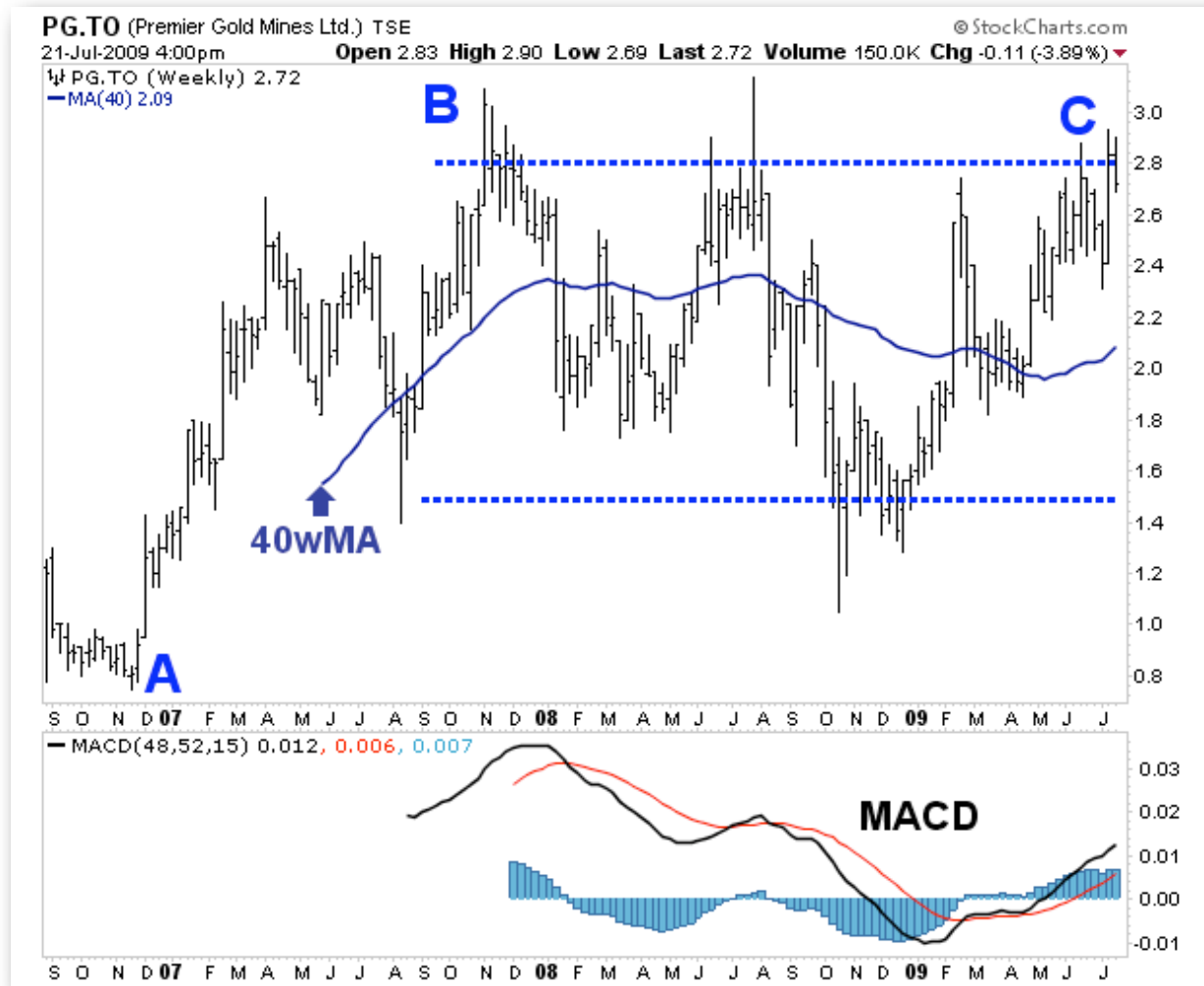


Premier Gold (PG: \$2.77)

July 23, 2009

Target: \$3.70

Reversal Level: \$2.40



Premier Gold is on the verge of a major breakout.

Premier Gold had a strong rally from \$0.81 in November 2006 to 3.03 in November 2007 (A-B). The stock then had a pullback followed by a wide horizontal trading range mostly between \$1.50 and \$2.80 (see dashed lines). Recently the stock rallied to the top of this trading range (C) to show potential for a major breakout. A decisive move above \$2.80-3 would confirm just that.

Technical indicators including the rising 40-week (200-day) moving average, the VSI and the MACD (see lower panel) confirm its bullish status. Only a decline below \$2.40 would reverse the positive status of this stock.

A move above \$3 would provide a target of \$3.70 (a 33% appreciation potential from current levels). Significantly higher targets are also visible.